

How to calculate the word count for figures

The word count for figures and tables are based on how much space the figures or tables take up on a printed page in the journal. Tips and examples are shown to help authors better calculate the word count for figures.

Things to remember

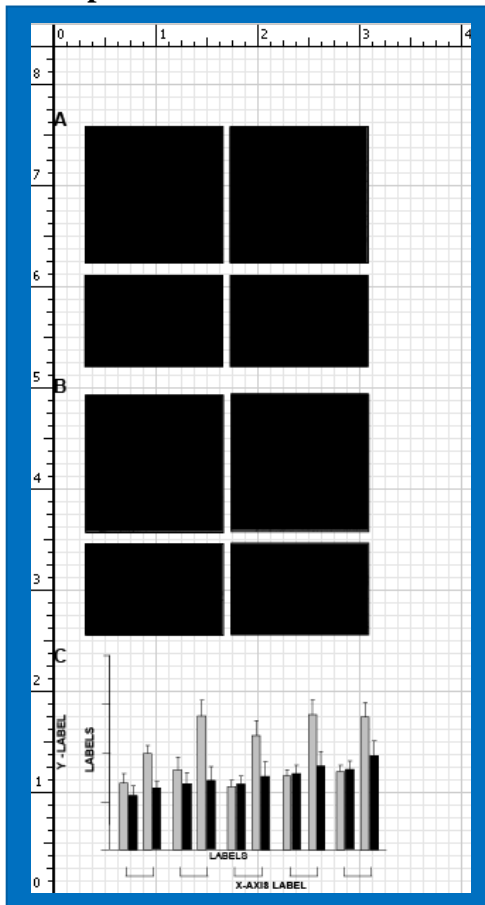
- 1 column width = 3.25 inches
- 1 ½ column width = 3.3 – 5 inches
- 2 column width = 7 inches
- 1 vertical inch for 1 column width = 50 words
- 1 vertical inch for column width > 1 = 100 words
- Approximately 1000 words per page

Style issues that can affect sizing of figures

- Text font must be Arial
- Text size can be no smaller than 7.2
- Width and height of stains and histology slides can be no smaller than 1 inch

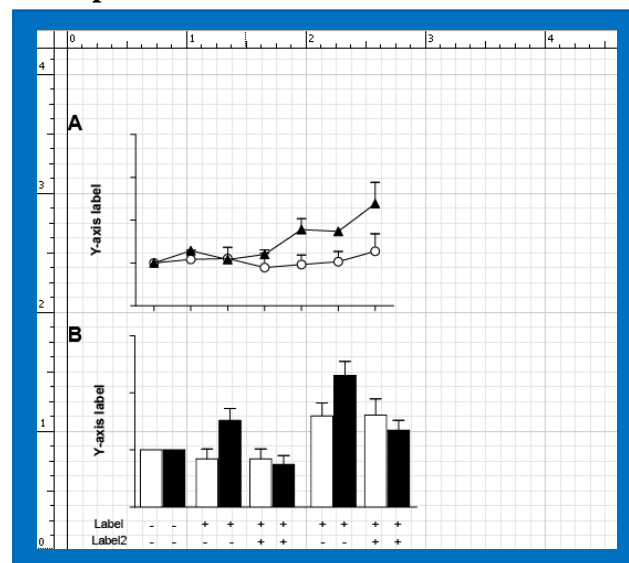
Below are examples of different types of figures. Rulers are shown on the top and left side of each example to demonstrate the size. Please note that each example is sized so that it is publisher ready, so the sizes shown are accurate.

Example 1



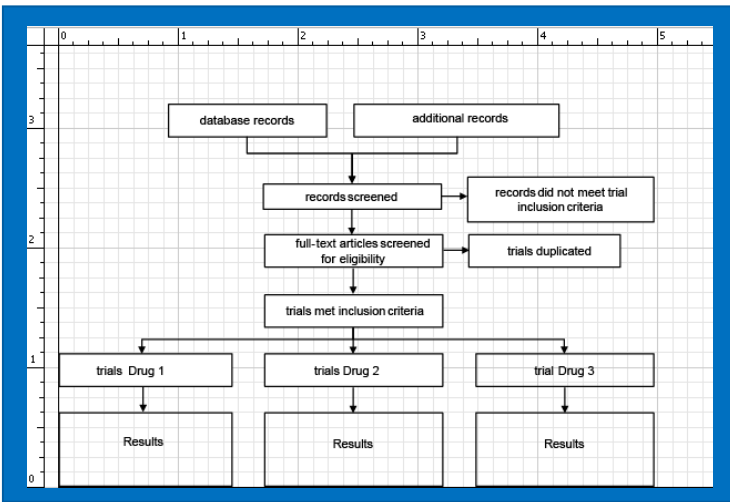
Vertical inches = 7.75
 # of columns = 1
 # of words per vertical inch for 1 column = 50
 Number of words for Example 1 = 387.5 (7.75 * 50)

Example 2



Vertical inches = 3.75
 # of columns = 1
 # of words per vertical inch for 1 column = 50
 Number of words for Example 2 = 187.5 (3.75 * 50)

Example 3

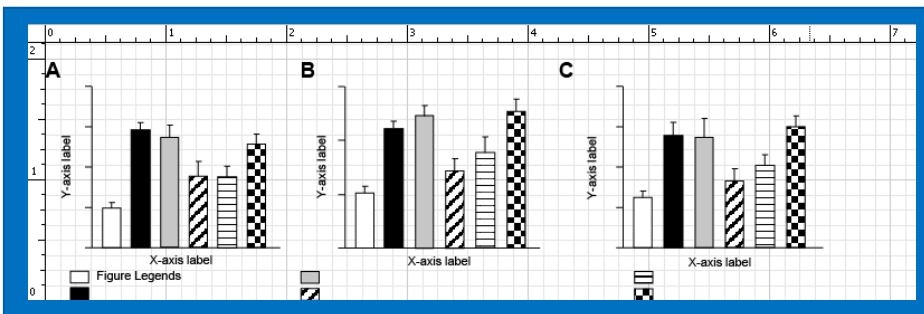


Vertical inches = 3.25

of columns = 1 ½

of words per vertical inch for 1 ½ columns = 100
 Number of words for Example 3 = 325 (3.25 * 100)

Example 4

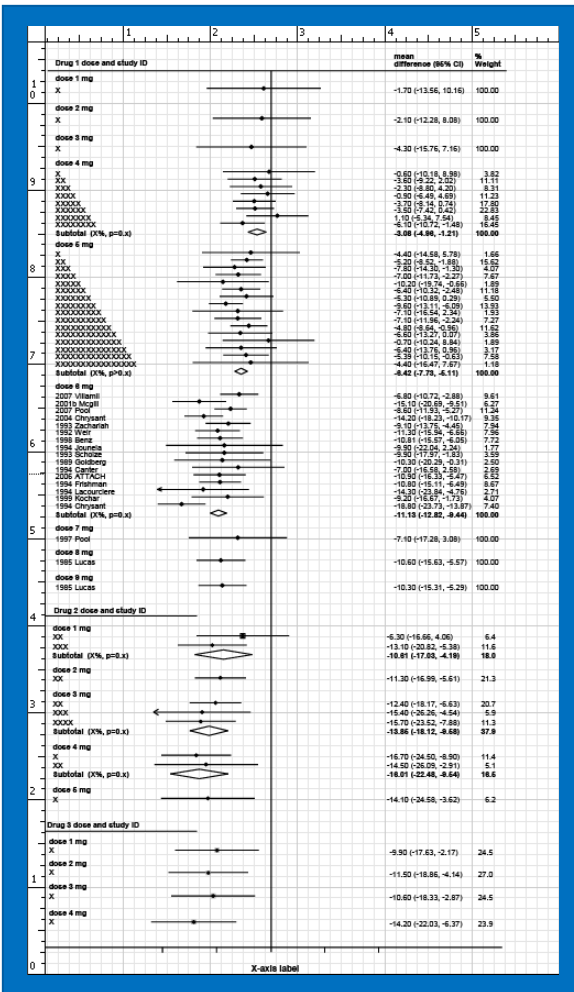


Vertical inches = 2

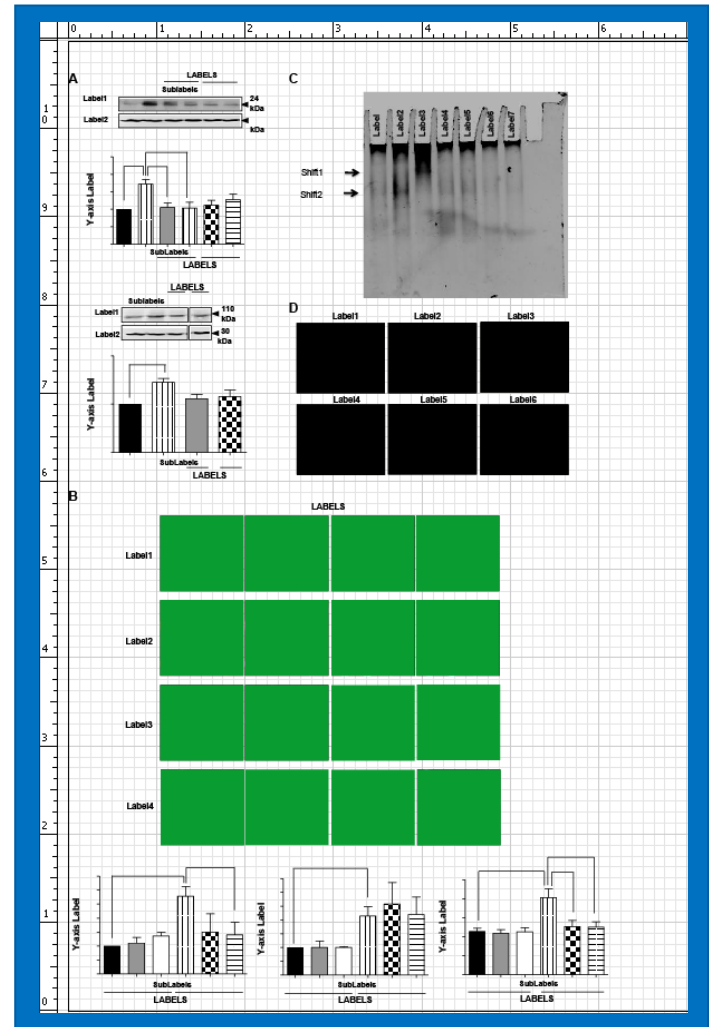
of columns = 2

of words per vertical inch for 2 columns = 100
 Number of words for Example 4 = 200 (2 * 100)

Example 5



Example 6



Vertical inches = 10
 # of columns = 2
 # of words per vertical inch for 2 columns = 100
 Number of words for Example 5 = 1000 (10 * 100)

Vertical inches = 10
 # of columns = 2
 # of words per vertical inch for 2 columns = 100
 Number of words for Example 6 = 1000 (10 * 100)

One final note, if a figure fits within a 1 1/2 columns, then the figure legend will be printed on the right side of the figure. This means that you can subtract these words from the count for the manuscript.

Example –
 Word count calculated by Word (title page through figures legends) = 5000
 Figure 2 is 1 1/2 columns
 Figure legend word count for figure 2 calculated by Word = 50
 Subtract 50 from 5000
 Word count before figures and tables are added = 4950